

Topaz Clean

v2.0

User Manual



I. Installation

A. How to Install.....	3
B. Entering Your Key.....	3
C. Host-Specific Installation.....	3
1. Irfanview.....	4
2. Paint Shop Pro / Photo Impact.....	4

II. Introduction

A. Enhanced Photography.....	6
1. Enhancing Your Images.....	6
2. Edge Manipulation.....	6
3. Selective Detail Reduction.....	6
4. Artistic Detail Flattening.....	6
B. Topaz Clean 2.....	7
1. About Topaz Clean.....	7
2. New Features.....	7

III. Work Area

A. Interface.....	8
B. Preview.....	9
C. Presets.....	11
1. Applying Presets.....	11
2. Refresh Preset Previews.....	11
3. Presets Menu.....	12
4. Deleting Presets.....	12
5. Sharing Presets.....	12
6. Importing / Exporting Presets.....	13
D. Snapshots.....	14
E. Navigator.....	14

IV. Menu & Settings

A. Menu.....	15
1. Preferences.....	15

2. Check for Updates.....	15
3. Enter Key.....	16
4. User's Guide.....	16
5. Technical Support.....	16
6. Online Resources.....	16
7. About.....	16
8. Share (presets).....	16

V. Settings & Parameters

A. Clean.....	17
1. Strength.....	17
2. Threshold.....	17
3. Radius.....	17
B. Edges.....	17
1. Accent.....	17
2. Radius.....	17
3. Sharpness.....	17
C. Texture.....	18
1. Strength.....	18
2. Boost.....	18
3. Size.....	18

VI. Work Flow

A. Sample Project.....	19
B. Simplify Express.....	24

VII. Additional Resources

A. Frequently Asked Questions.....	26
B. Glossary.....	28
C. Shortcut Keys.....	30
D. Company Info.....	31

Installation

Topaz Clean 2 is a Photoshop plug-in, which means it won't run by itself and requires a compatible host program.

To Install

1. Close Photoshop or other image editing program if you are using it.
2. Open the Topaz Clean 2 zip file, double-click on the Topaz Clean 2 installer, and then follow the on-screen instructions.



Mac Dmg



Windows Zip

3. Your Topaz plug-ins will automatically be installed in your Photoshop plug-ins folder.
4. After the installation, you will need to enter your license or trial key.

Important: To install the product on a second computer, you will need to download Clean 2 and then enter your same license key.

Entering Your Key

Entering your trial key allows you to save your projects and print them during your evaluation period. Entering your license key allows you to do the same, except without any time limitations.

1. Start by opening up an image in Photoshop.
2. Go to Filters -> Topaz Labs -> Clean 2 -> Menu -> Enter key.
3. You can then copy and paste or type your key in.

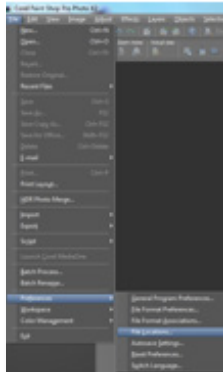
Host-Specific Installation

In Windows, Topaz Clean 2 is supported by most host applications that support Photoshop plug-ins. This includes Paint Shop Pro, Painter, and Irfanview, although there are other host programs that may also support Topaz Clean 2. To install in Aperture please refer to the Topaz Fusion website. Topaz Clean 2 is not supported by Google Picasa.

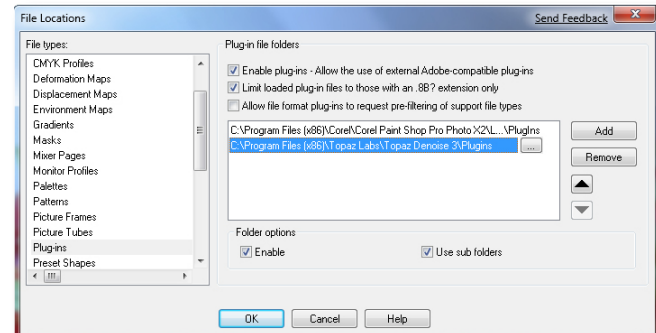
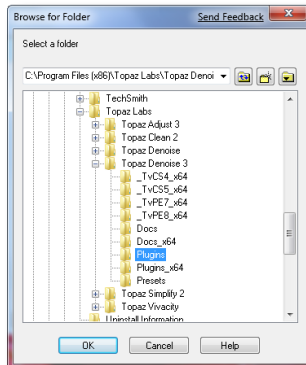
To install Clean 2 in Paint Shop Pro, Photo Impact, or Irfanview first download Topaz Clean 2 to the default location. Then, to install into each program, follow the host-specific instructions on the next page.

How to install Topaz Clean 2 in Paintshop Pro / Photo Impact

1. First launch PaintShop Pro / Photo Impact.
2. Go to Menu file -> Preferences -> File Locations. Select “Plug-ins” from the “File Types” list and click “Add”.



3. Choose C:\Program Files\Topaz Labs\Topaz clean2 plug-ins and click “OK”.



4. Topaz Clean 2 is now available to use. Go to Effects -> Plugins and select “Topaz Clean 2”.



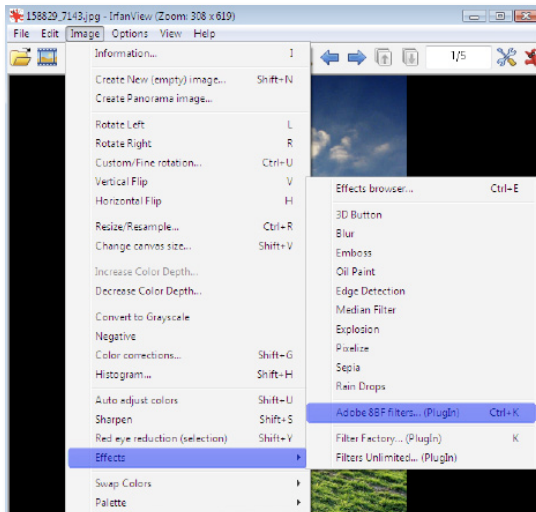
Installation

How to install Topaz Clean 2 in Irfanview

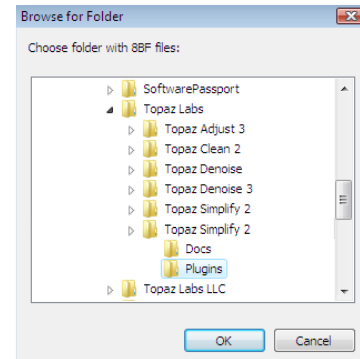
1. Make sure that you have downloaded and installed the 8bf plug-in add-on, available on the Irfanview webpage. (<http://www.software.com/irfanview-plugin>)



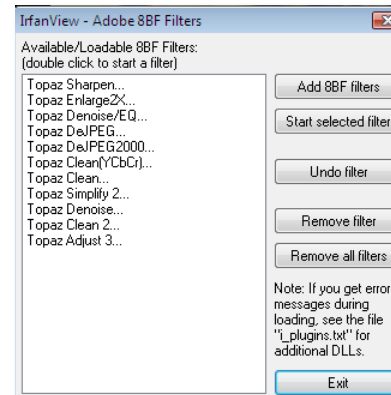
2. Open Irfanview and go to Image -> Effects -> Adobe 8BF filters.



3. In the screen that pops up, select “Add 8BF filters” and navigate to the C:\Program Files\Topaz Labs\Topaz Clean 2 Plugins folder and click “OK”. You will then see “Topaz Clean 2” in the Available/Loadable 8BF Filters section.



4. To use Topaz Clean 2 in the future, simply go to Image -> Effects> Adobe 8BF filters again and select “Topaz Clean 2”.



Introduction

Enhanced Photography

Enhancements can bring new unique elements to your photography. Topaz Clean 2 opens up new possibilities for any photo with its extensive smoothing, edge sharpening, flattening and texture control capabilities. For its quick, crisp, and effective manipulation of detail and edge stylization, Topaz Clean 2 is an invaluable part of a photographer's toolbox.

Take control of the extensive smoothing capabilities of the new Topaz Clean 2 to add gripping one-of-a-kind enhancements to any photo. Experience a wide range of effects from highly effective edge sharpening to graceful artistic effects that leave viewers breathless.

Smooth and Unique Edge Manipulation

Topaz Clean's state-of-the-art edge algorithms with integrated smoothing capabilities make it ideal for high-quality sharpening, but why stop there? Give images fantastic and inimitable edge effects that add an extra punch to the photo. Careful application of Topaz Clean can make the difference between a decent photo and a true knockout.



Before Topaz Clean 2



After Topaz Clean 2

Highly Selective Detail Reduction

Take unprecedented control over the highly precise manipulation of detail. Choose the nature of desired detail and let Topaz Clean 2 do the rest. Clean only removes medium-sized discolorations and blotches while preserving major facial features and tiny but important skin detail.

Artistic Detail Flattening

Intentional artistic over-application of Topaz Clean 2's innovative smoothing function can create an image that pops right off the page.

Clean 2 preserves the contours and overall image integrity while optimally removing the less-desired details.

Topaz Clean 2

About Topaz Clean 2

Topaz Clean 2 is a Photoshop plug-in that uses a recent breakthrough in image processing technology to bring a beautiful and innovative look to your photos.

Topaz Clean 2 uses sophisticated algorithms that allow the user to quickly and effectively enhance an image without spending a lot of time tweaking settings or making adjustment layers.

The primary functions of Topaz Clean 2 are:

1. Streamline details for unique, creative or abstract effects on image quality.
2. Smooth and sharpen image detail with highly selective detail reduction tools.
3. Flatten texture while preserving contours and overall image integrity.
4. Manipulate color aspects for stylized effects.

Introduction

New Clean 2 Features

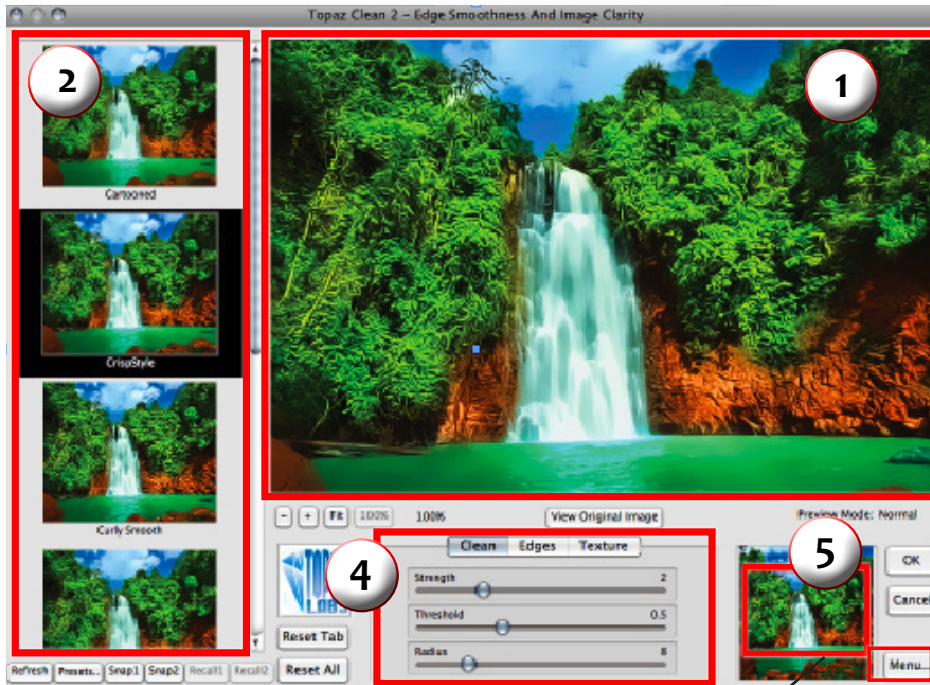
1. **New user interface.**
2. **Preset thumbnails** - Small previews of each preset's effect on the image are now displayed in the Previews section.
3. **Shortcut hotkeys** - For example, use the spacebar to switch between the original and the processed images, the + and - keys to zoom in / out of the preview, and the arrow keys to change parameter values.
4. **Snapshot buttons** - Temporarily save settings to one of the two snapshot buttons and recall it quickly.
5. **Navigation View** - A small navigation view makes it much easier to navigate large images.
6. **Performance improvements** - Reduced RAM use can handle much larger images with processing speed improvements.
7. **Other miscellaneous features** - For example, you can now import presets directly from the Internet, randomize parameters, etc.

Interface

Although the Topaz Clean 2 interface may look intimidating at first glance, don't worry: it's actually quite simple and easy to use. You'll be a pro after experimenting for a bit. In order to make sense of the function of each of the various controls, we have divided the interface into five sections:

2. Presets

Provides "snapshots" of accessible pre-defined parameter settings



1. Preview

Displays the processed preview of the image

3. Menu

Enables user settings and contains other options

4. Settings and Parameters

Controls the editing using sliders to adjust the various effects

5. Preview Navigator

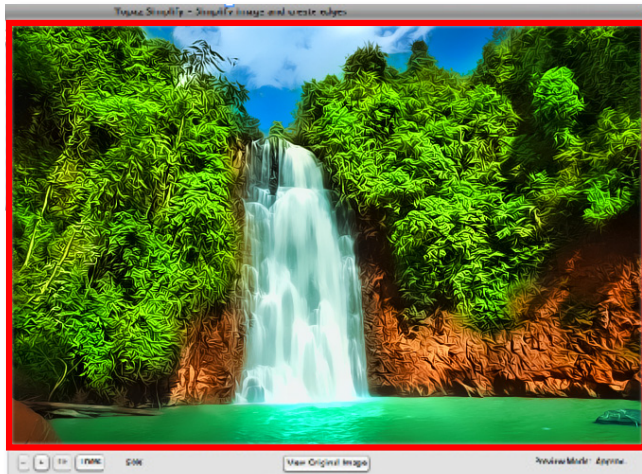
Displays the region of the preview image you are currently focused on



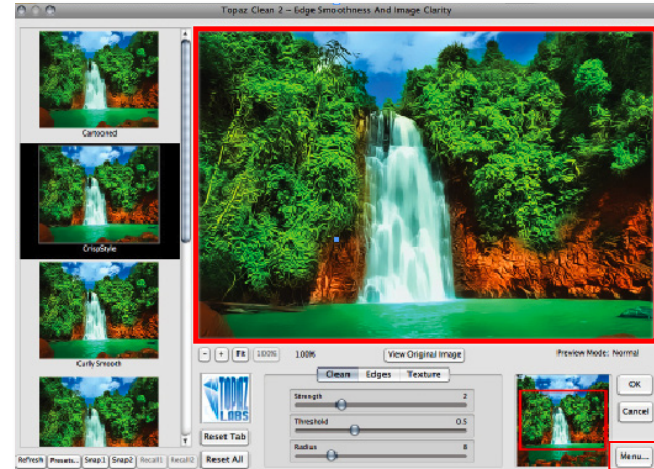
Work Area

Preview Section

The Preview section is the big image on the top-right that shows you the processed preview of the image. To pan the preview image, click and hold the left mouse button on the preview image and drag it around. When you let go of the mouse button, the new portion of image will be processed and the result will be displayed.



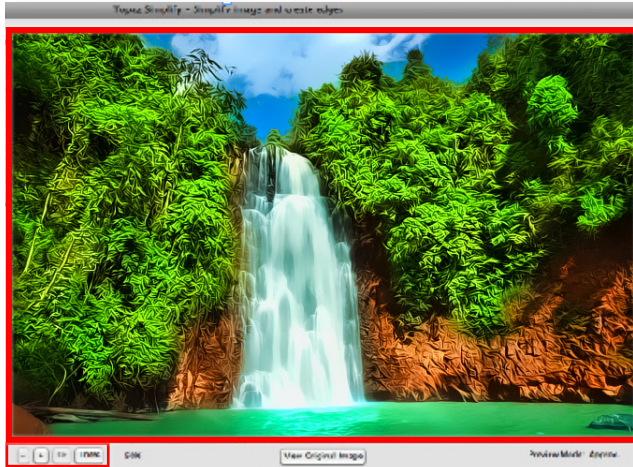
View Original Image



To compare the filtered and un-filtered images, click and hold the “View Original Image” button to switch to the unfiltered image. Letting go of the button will switch back to the filtered image.

You can also use SPACE bar to switch back and forth between your filtered and unfiltered image in the preview window.

Work Area



You can zoom in or out of the preview image by clicking the “+”, or “-” buttons below the preview image, and you can resize the window, as well. The “Fit” button will fit the entire image into the window. The “100%” button will zoom to 100% view. If zoomed below 100% the preview image will be internally resized in order to speed up preview updating.



“Ctrl +” and “Ctrl -” keys zoom in and out of the image, just like in Photoshop. You can use the arrow keys to adjust the value of the slider that is currently selected. A complete list of the shortcut keys can be found in the Shortcut Keys section later in this manual.

Photoshop and other host software support many image Modes, such as Grayscale, RGB, LAB, CMYK, etc. Images can also be 8, 16, or 32 bits per channel. Topaz Clean 2 supports both 8 bits per channel and 16 bits per channel. Topaz Clean 2 supports RGB mode only. To work on black-and-white images, first convert them to RGB mode.

Work Area

Presets

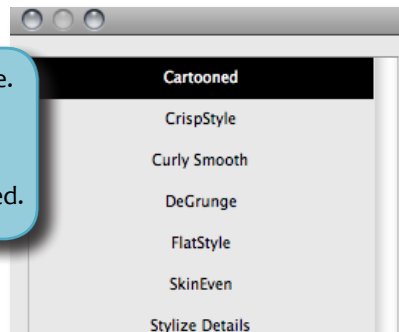
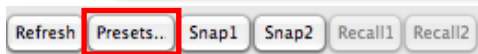
Presets are a great way to speed up and Clean 2 the whole process of using Topaz Clean 2. Presets are set previews with previously defined settings that you can recall and reapply at any time.

We've included some presets for you and, although they won't work for every single photograph, they serve as excellent starting points for customized tweaking.

Applying Presets

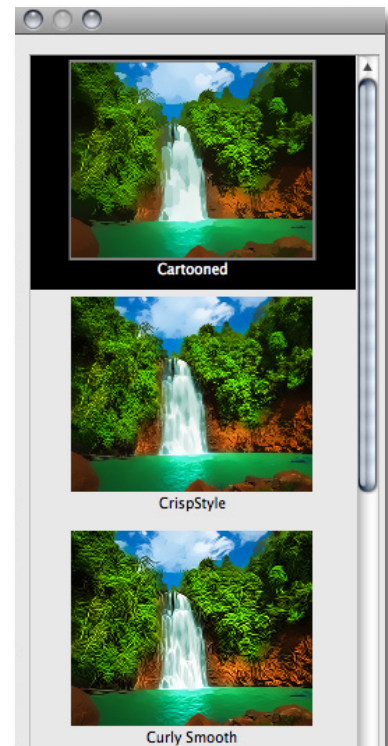
Applying a previously defined preset is easy and intuitive. Clean 2 clicking on a preset will change all the settings in Topaz Clean 2 to match those in the selected preset. To get the exact results you want, you may still want to go through the tabs and tweak the parameters.

You can also view presets in List mode. Just click the Preset... button and select "Toggle list/Thumbnail". The plug-in will also load a lot faster since no thumbnails need to be updated.



Refresh Preset Previews

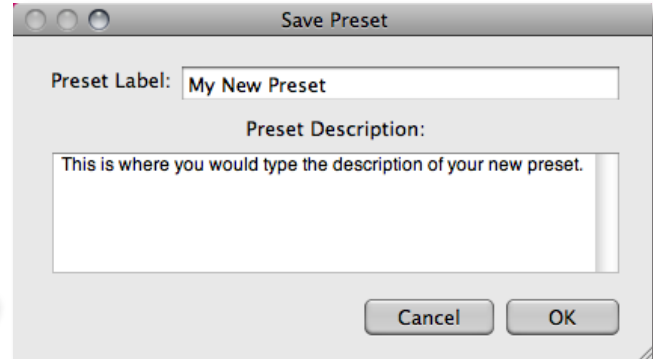
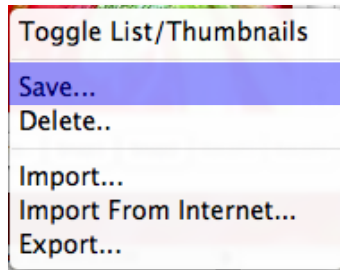
Click the "Refresh" button to position the preview presets to where your main Topaz Clean 2 preview is located. If you navigate through the preview to a certain location within your image and then press the "Refresh" button, each preset preview thumbnail will be repositioned to that location as well. The preset previews will also zoom to the same degree as the preview window.



Work Area

The Presets Menu

Sometimes it's convenient to be able to define presets and save your settings for later use. To do this, first adjust the Topaz Clean 2 parameters until you're satisfied with the result. Then, click on the "Presets. . ." button and click "Save...".



Enter a preset name and optional description and click "OK". Note that if the name you've entered is the same as a preset you've already defined, instead of creating a new preset, Topaz Clean 2 will just override the first one.

Your preset will be automatically saved as a new file with a ".tpp" extension in the Topaz Clean 2 Presets menu and the preview is automatically generated. To apply it later, just click it like any other preset.

Deleting Presets

If you'd like to delete a preset, use the Delete option with your desired preset selected.

Please Note: Default presents cannot be overridden or deleted.

Sharing Presets

Feel free to share your saved presets by emailing them to your friends and having them put it into their Topaz Clean 2 Presets folder.

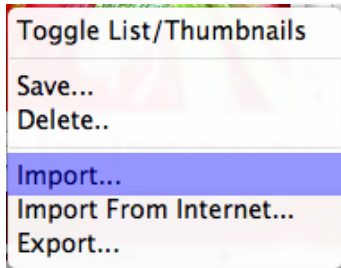
Saved presets are located in the Topaz Clean 2 "Presets" folder:
C:\Program Files\Topaz Labs\TopazClean2\Presets
unless you've opted to install Topaz Clean 2 into a different directory.

Mac users have this folder at HD/Library/ApplicationSupport/TopazLabs/Clean2/Presets.

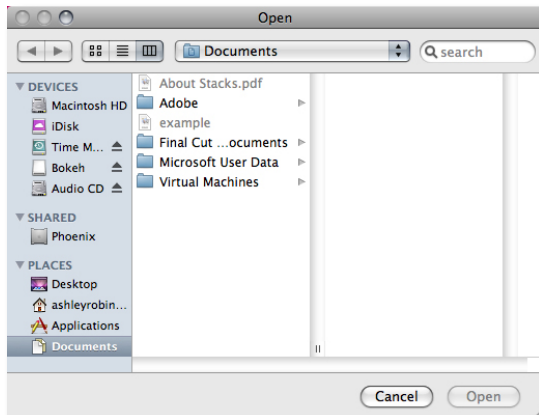
Work Area

Importing and Exporting Presets

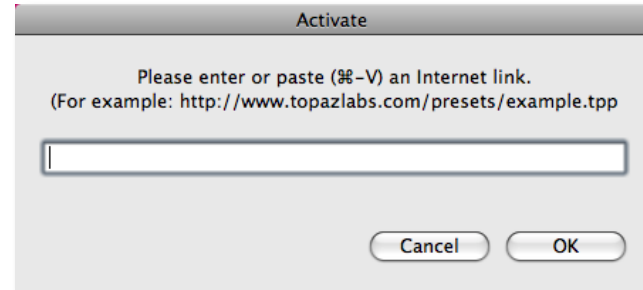
To import a preset file, click the “Presets. . .” button, and then select “Import. . .”.



This will open up a “Browse” box to import a saved preset from your computer into Topaz Simplify. This is useful if you have downloaded a preset file that you’d like to use.



To import a preset file directly from the Internet, click the “Import from Internet...” button and paste in the exact URL in which the preset file is located.



To export the preset file to a certain location, click “Export”. You can then share this file with other users who may then Import it.

You can also automatically generate forum or email-friendly text of your current settings. This is useful if you want to share your current settings but don’t want to deal with saving and exporting presets.
See page 15 for more details.

Work Area

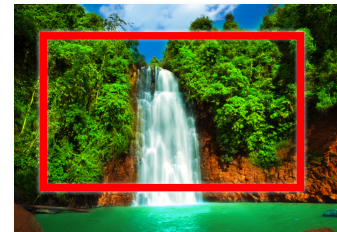
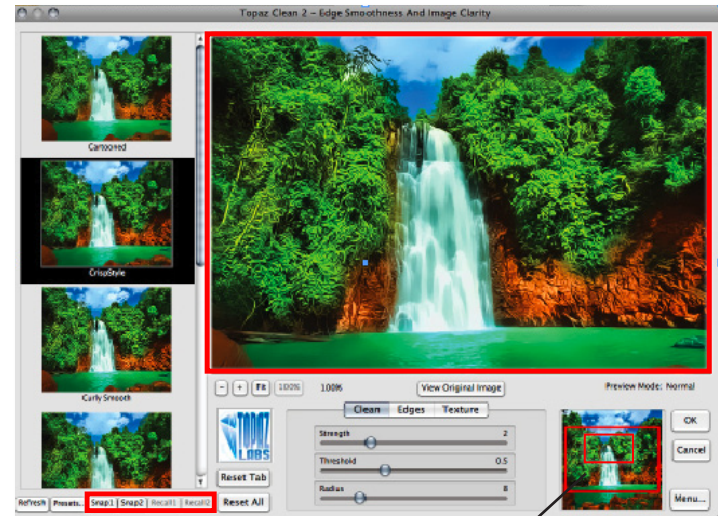
Snapshots

New in Topaz Clean v2.0 is the “Snapshots” feature. You’ll find it on the bottom left hand corner under the Presets panel.



The “Snapshots” feature gives you a quick way to create up to two snapshots of your settings to compare without having to save presets. For example, if you wanted to compare how two different settings would look on an image, you could simply save both settings as different snapshots and compare the two without having to save, apply, and then delete presets.

To use “Snapshots”, simply click “Snap 1” or “Snap 2” to save your current settings into memory. Clicking “Recall 1” or “Recall 2” applies the saved settings to the image in the same way as a preset does. Please note that the snapshots are deleted if you exit out of the current Topaz Clean 2 window because they are meant to help you in the current Topaz Clean 2 session only.

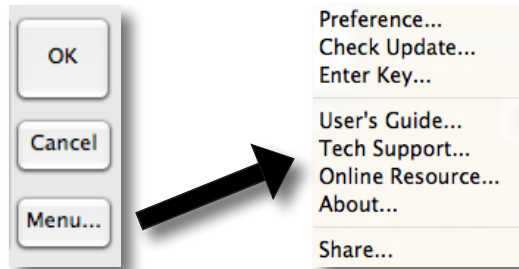


Preview Navigator

The Preview Navigator allows you to see what region of the image you are viewing. You can also pan your image in the preview section by “grabbing” the red box in the navigator and moving it to your desired location.

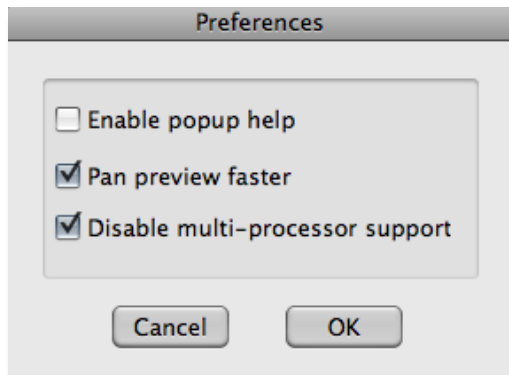
Menu

You can access Topaz Clean's menu by clicking on the Menu... button in the bottom right corner of the filter.



Preferences

Brings up a menu where you can change your pop-up help and pan settings.



Menu & Settings

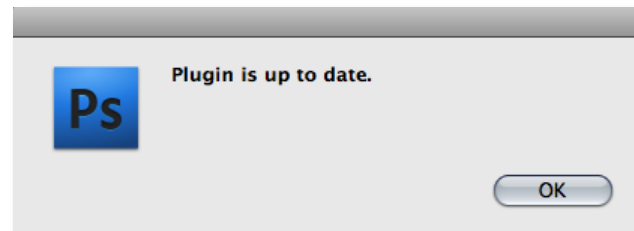
“Enable pop-up help” gives reminders and tips when you hover your mouse over certain areas of the filter. Turn this off if you find that these pop-ups are impeding your work.

“Pan preview faster” affects the panning speed of the Topaz Simplify preview.

Every setting in the Preference window is saved for future use of Topaz Clean. In order to change one of these preferences, simply access this menu again.

Check for Updates

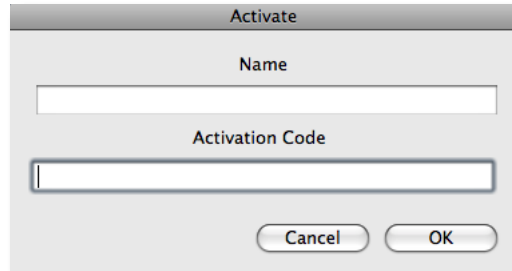
Select this to check if you have the most current version of Simplify. Topaz Clean will let you know if there is a new version available.



Please note that the “Disable multi-processor support” option only applies to Mac users.

Enter Key

Select this to enter a license key or trial key for Topaz Clean 2.

**User's Guide**

Select it to bring up this user manual.

Technical Support

Brings you to the Topaz Labs technical support page.

Online Resources

Brings you to the Topaz Simplify homepage to view video tutorials and suggestions.

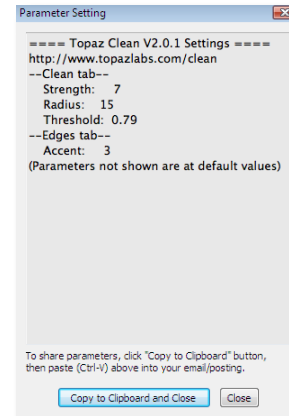
About

Shows you your current version of Topaz Clean 2 and lists the Topaz Labs homepage.

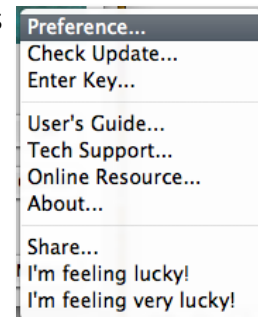
Menu & Settings

Share / Copy Settings to Clip Board

Use this button to automatically generate forum or email-friendly text of your current settings (copied to your clipboard). This is useful for when you want to share your current settings but don't want to deal with saving and exporting presets.

**I'm Feeling Lucky ! / I'm Feeling Very Lucky!**

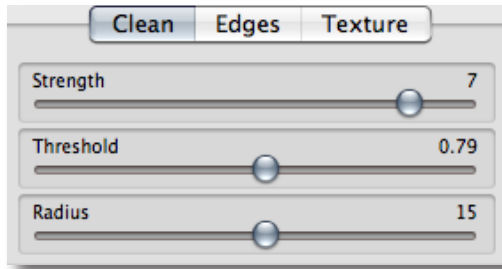
Selecting these features will apply randomized settings to your image. This is useful when you want to experiment with different settings.



Topaz Clean 2 has three settings tabs and a total of 9 parameters to help you achieve optimal image results.

Clean

This is the primary tab in Topaz Clean 2. The Simplify tab flattens texture, removes weak image detail, and makes everything look a little more flat. It can be used by itself or with the other methods for more subtle post-processing.



Strength

This parameter determines the overall strength of the cleaning effects. It affects smoothness both in this parameter and in the Edges tab. A larger value produces more pronounced effects.

Threshold

This sets the threshold for feature size to be removed. A higher value generally produces a cleaner and smoother image.

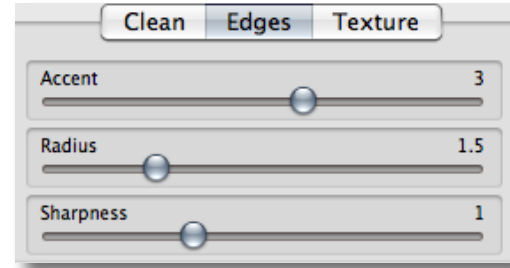
Settings & Parameters

Radius

The radius of the effect in pixels. A higher value generally creates a flatter image.

Edges

The Edges tab stylizes image detail and edges. It is mainly used to make the edge smoother.



Accent

Controls the degree of edge smoothing. A higher value produces smoother edges, and can give curly looking effects.

Radius

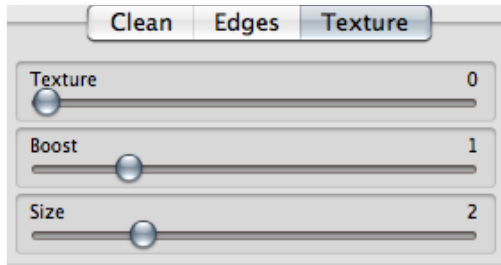
The size of the edge processing. A higher value produces thicker edges.

Sharpness

Edge sharpness value. A higher value produces more pronounced edges with higher contrast.

Texture

The Texture tab re-applies the original image features on top of the image processed through Clean and Edges. It helps refine the image features for the most natural result.



Strength

Determines the amount of original texture to be preserved. A higher value brings back more texture.

Boost

Boosts the strength of smaller details while keeping strong texture intact. A value less than 1 will reduce the intensity of smaller details.

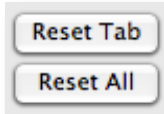
Size

Sets the fineness of detail texture (in pixels) to be preserved. A larger value will preserve larger detail as texture from the original image.

Settings & Parameters

Resetting Parameters

You can reset parameters to their default at any time using the “Reset” buttons.



Want to learn more about how you can artistically enhance your photos using Topaz Clean 2's and advanced detail and edge stylization tools?

Explore the sample and express work flows included in this guide to help you unlock the hidden potential within your images.

Sample Project

In this section we are going to walk you through an sample project step-by-step to help you become more familiar with the Clean 2 program.



Before Clean 2

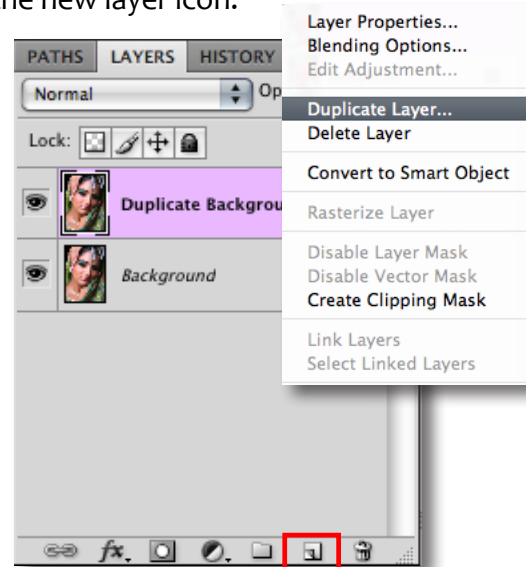


After Clean 2

We will be using this photo for our example. You can notice the artistic enhancement and detail enhancement in the before and after shots seen above. In the following steps we will be showing you how to achieve these optimal results with your own photos. Lets get started.

1. Open an image file.
2. Create a duplicate layer of your image. Right-click on your image layer in your layers and se-

lect duplicate layer. You can also achieve this by selecting your image layer and dragging it down to the new layer icon.



Please visit the Topaz Clean 2 website at <http://www.topazlabs.com/clean> for video tutorials, tips, and tricks!

3. To begin working on your image go to Filters -> Topaz Labs -> Topaz Clean 2. Once the Topaz Clean 2 interface opens up select the “Reset All” button to see your unprocessed image.



4. If you want to choose a default preset, scroll through the panel on the left side of the screen. To select it, just click on it and the sliders will automatically adjust to the pre-defined settings and parameters. For the purpose of this example we will use the “Crisp Style” preset.

To the right are just a few examples of the artistic features that can be created using the Topaz Simplify presets. Just one click and you can watch your image instantly transform into a masterpiece.

Simply specify where you want more detail and how much detail and Topaz Simplify will quickly enhance your photos with natural art tools including: paints, pastel, charcoal, oil pastels, pencils, color pencils, etc.



Cartooned



DeGrunge



Sketch Light

5. Begin in the Clean tab. Adjust the “Strength” parameter to smooth the texture and weaken details.



Low Strength Settings



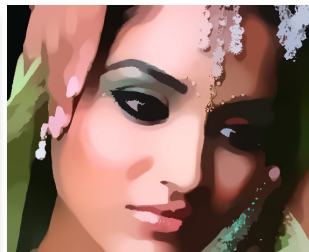
High Strength Settings

The higher the Strength value is, the more pronounced effects you will see.

You can also change the strength of the detail reduction by increasing the “Threshold.” Also, adjusting the “Radius” will alter the reach of the effect; increasing this parameter will create a flatter image. Too high a value will result in a loss of texture and detail



Min Threshold & Radius Settings



Max Threshold & Radius Settings

6. Now, move on to the “Edges” tab to stylize your image detail and edges. This is also where you can make the edges smooth.

You can start with “Accent” to increase or decrease the edge smoothness in your image. Move this slider higher than 2 to decrease edge smoothness and below 2 to increase it. A higher value can give curly-looking effects.



The best way to get great-looking images is to experiment with the filter until you're satisfied. Despite the number of sliders and settings, getting a great result is easier than you might think!

If you want to modify the size of your edges use the “Radius” slider.

Then, if you want to make the edges of your image stand out more, you can do so by adjusting the “Sharpness.” Using a higher will produce more pronounced edges with higher contrast.



Max Accent, Radius & Sharpness

7. Next, move to the Texture tab. Here you can refine your image’s features by reapplying original features. This will give your image a natural look.

If you want to reduce the smoothness of your image without increasing detail then increase the “Strength” slider.

Be careful not to over-use this slider, doing so will make your image appear extremely grainy.

Work Flow

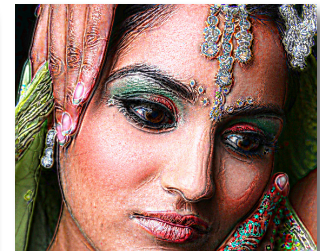


Grainy Image

Use the “Boost” and “Size” sliders to define the texture in your image.



Maximum Boost



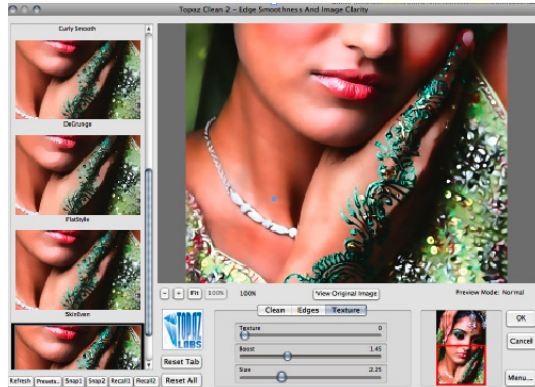
Maximum Size

Increase “Boost” to increase the intensity of smaller details. Increase “Size” to preserve more original image detail. Be careful not to over-use these sliders, doing so will make your image, grainy, fuzzy colorful.

Go back and make any necessary adjustments to your image, to refine your details.



Be sure to pan your image and make sure that you are satisfied with the amount of smoothness and detail in your image.



If necessary, make some adjustments.

Once you are satisfied with your adjustments, select “OK” and watch your image transform.



Now you should have an artistically enhanced image!

Tip: If you experience a loss of color intensity you can easily revive it in Photoshop. Just go to Image -> Adjustments -> Hue / Saturation and adjust the Hue and Saturation sliders until you are satisfied.

Simplify Express

This image was improved using the “SkinEven” preset. The preset is intentionally designed to only removed medium-sized discolorations and blotches while preserving major facial features and tiny but important skin texture.

Clean 2 and the “Skin Even” preset offers precise control over the manipulation of texture and detail. in your image Simply choose the nature of desired texture and let Topaz Clean 2 do the rest.



Original Image



After Clean 2

Settings & Parameters

Preset: Clean Face

Clean

Strength: 3

Threshold : 0.6

Radius: 10

Edges

Accent: 0

Radius : 3.31

Sharpness: 1.16

Texture

Texture: 0.36

Boost : 2.96

Size: 2.01



Original Image



After Clean 2

Before using Simplify we processed the image in Topaz Adjust using the “Specify” preset to make the color richer and to enhance the smaller details.



After Topaz Adjust

Settings & Parameters

Preset: Clean Face

Clean

Strength: 3

Threshold : 0.1

Radius: 4

Edges

Accent: 3

Radius : 3.35

Sharpness: 1.2

Texture

Texture: 0.05

Boost : 1.2

Size: 1.75

Frequently Asked Questions

“I need a Topaz Clean 2 trial key.”

Visit <http://www.topazlabs.com/downloads> for a trial key. Please check your Spam folder because your Spam filter sometimes filters out the automated email.

If you need more time to evaluate, please e-mail us at support@topazlabs.com for an extended trial key.

.....

“I can’t find Topaz Clean 2 in the Photoshop Filters menu.”

If you’re using Windows:

1. Go to C:\Program Files\Topaz Labs\Topaz Clean\Plugins. Right click the file “tlclean2.8bf” and click “Copy”.
2. Go to your Photoshop Plug-Ins folder, usually located at C:\Program Files\Adobe\Adobe Photoshop CSx\Plug-Ins. First, delete anything that is currently there that has to do with Topaz Clean. This includes any folder that might be labeled “Topaz Clean” or any tlclean2.8bf file. After doing that, right-click on any empty space and click “Paste”.
3. Quit and restart Photoshop and Topaz Clean 2 will appear in your Filters menu. You will have to open up an image to be able to use Topaz Clean 2.

If you’re using Mac:

1. Go to /Library/Application Support/Topaz Labs/Clean/Plugins and right-click Topaz_clean2.plugin. Click “Copy”.
2. Go to Applications/Adobe Photoshop CSx/Plug-Ins (or wherever your Photoshop Plug-Ins folder is located). Delete any current reference to Topaz Clean. Afterwards, right-click any empty spot and Paste the Topaz_clean.plugin file into the Photoshop Plug-Ins folder.
3. Quit and restart Photoshop and Topaz Clean 2 will appear in your Filters menu. You will have to open up an image to be able to use Topaz Clean 2.

.....

“I can’t see the Topaz presets!”

This is probably because your presets file is not readable. To check on Mac, go to “/Library/Application Support/Topaz Labs/clean” and right click the folder Presets. Make sure everyone has at least Read access to the folder. You’ll also need Write access if you want to save presets.

You’ll also want to make sure that Topaz is installed in the default folder, or the presets will not show up or save.

Frequently Asked Questions

“What are the limitations of the trial version of your software?”

The only limit on the trial versions of the Topaz plug-ins is time. The free trial versions are designed to enable you to experience the full functionality of our plug-ins for a 30-day trial period. After the trial period is up, you will only be able to use the Topaz software by purchasing it. You will then receive a license key to activate the plug-in, and the trial version will automatically become the full version with no time limitations.

“If I use the 30-day trial version will I need to uninstall the trial version before I upgrade to a full version?”

No, the Topaz trial software is designed to be unlocked to become the full version simply by entering a license key. The full license key will be e-mailed to you immediately after you purchase the software.

“Where do I enter my key?”

To enter your key, open up an image in Photoshop. Then go to Filters -> Topaz Labs -> Clean 2 -> Menu -> Enter key. You can then copy & paste or type your key in.

“My Topaz 3 key doesn't work!”

There are a couple of reasons why Topaz Clean might think your upgraded key is invalid.

First, make sure that you actually have the upgraded key. It'll be in the format “xxxxxx-xxxxxx-xxxxxx-xxxxxx” and will be all numbers in 30 digits in five groups of six (no letters). If you don't have this upgraded key, visit <http://www.topazlabs.com/clean2key.php> to get it.

Second, make sure that you have the latest version of Topaz Clean. If you open up Simplify and go to About, the Simplify item should say Topaz Clean 2 instead of just Topaz Clean. If not, download and install the latest version of the software here: <http://www.topazlabs.com/downloads>.

Third, make sure that as you're entering the key there is nothing in the space beforehand. This means clicking, pressing Ctrl-A, and hitting delete to make sure that absolutely nothing is in that field before you paste in the key.

If it doesn't work when you copy and paste, try typing it out, and vice versa.

Glossary

Achromatic - Without color.

Algorithm – Any bit of code or programming that defines a process.

Blur - Make or become unclear or less distinct.

Clean Color – A parameter that controls the amount of color noise to reduce.

Chroma - Purity or intensity of color.

CMYK – Cyan, magenta, yellow, and black. A color model commonly used for 4-color printing by printers to define and mix all of the colors they are capable of outputting.

Color channel – The visual component of a color digital image that represents all the pixels in that picture made up of a specific primary color. For example, in a typical digital photo, the primary colors of red, green and blue (from the RGB color model) create all the colors in that photo, which may be represented by three color channels, each of red, green or blue.

Download – The process of transmitting or transferring data from one device to another.

Export – Outbound data transfer in a format that can be used by other programs.

Grain –Lightly speckled noise that is used to apply a more natural look to an image.

Import – Inbound data transfer into a file or document.

ISO – The amount of sensitivity of a digital camera sensor. A higher ISO enables faster shutter speeds and/or better performance in low light, but is more susceptible to experiencing increased noise.

Luma - The brightness in an image (the “black” and “white” or achromatic portion of the image). Luma represents the achromatic image without any color, while the chroma components represent the color information.

Noise – Visible effects of interference in an image from a digital camera. Often appearing as random colored dots sprinkled throughout the image, or uneven coloration in what should be smoothly-colored areas. It is most likely to show up in the darker or shadowed areas of an image. Noise can be an undesirable effect that detracts from overall image quality or something you can choose to create artistically.

Pan and zoom – A useful function that allows users to magnify the captured image in the preview and then, by using the cursor, to move or pan around the image. Typically pan and zoom allows users to magnify the image 2x or 4x time. By magnifying the images and zeroing in on a specific section, you can see details not visible when the entire image is sized to fit the preview.

Parameter - A numerical or other measurable factor forming one of a set that defines a system or sets the conditions of its operation.

Photo-editing or Imaging software – Programs in which you can alter your photos and / or create digital images. Depending on the software, you can improve exposure, color and other attributes of your picture, paint on it, add type, apply special effects, remove noise, resize it, combine it with other pictures, prepare it for email or posting on the web, output it to a printer or do any number of other manipulations or edits.

Plug-in - Computing (of a module or software) able to be added to a system to give extra features or functions.

Preset – A pre-defined combination of parameters and settings that are saved into a folder within Topaz Simplify. Topaz provides default presets... Thumbnails of presets are located on the panel at the right of the user interface.

Preview - Shows the processed preview of the image. The Preview section is the big image on the top-right. It usually displays only a portion of the actual image.

Radius - A specified distance from a center in all directions.

RAW image – An image file format that contains untouched, “raw” pixel information straight from the digital camera’s sensor. It has yet to translate the information in each pixel into the full color information, so this format offers more control over how the final JPEG or TIFF image is generated.

Reduce Blur – An de-blur function that uses de-convolution technology rather than simple sharpening techniques.

RGB – Red, Green, Blue. The color model that is used in digital cameras and by computer monitors.

Shadow - A dark area or shape produced by a body coming between rays of light and a surface.

Smoothing - To make a surface more regular or consistent; free from perceptible projections, lumps, or indentations.

Texture - The feel, appearance, or consistency of a surface or a substance

Shortcut Keys

Topaz Simplify uses some shortcut keys to speed up your workflow. Many of these keys are similar to those in Photoshop. The following keys work at all times.

Action	MAC Shortcut	PC Shortcut
View Original Image	Spacebar	Spacebar
Recall Snapshot 1	CMD-1	CTRL-1
Recall Snapshot 2	CMD-2	CTRL-2
Capture Snapshot 1	ALT-1	ALT-1
Capture Snapshot 2	ALT-2	ALT-2
Reset Current Tab	CMD-R	CTRL-R
Reset All	CMD-ALT-R	CTRL-ALT-R
Zoom to Fit	CMD-o CTRL-o	CTRL-o
Zoom to 100%	CMD-ALT-o	CTRL-ALT-o
Zoom In	+ or CMD - +	+ or CTRL - +
Zoom Out	- or CMD - -	- or CTRL - -

In addition, if a parameter slider is selected (usually by clicking on it) you can use the following keys to change its value:

Left arrow or up arrow	Reduce value by 0.01
Right arrow or down arrow	Increase value by 0.01
Page up key	Reduce Value by 0.1
Page down key	Increase value by 0.1
Home Key	Set the value to minimum
End Key	Set the falue to maximum

Contact Information

Topaz Labs LLC

5001 Spring Valley Road

Suite 400 East

Dallas, TX 75244

Phone: 972.383.1588

Fax: 866. 876.1393

Technical Support

<http://topazlabs.com/support/>

support@topazlabs.com

For more information

info@topazlabs.com

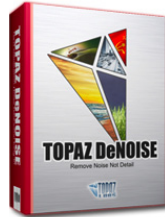
Topaz Labs LLC, a privately owned company in Dallas, Texas, focuses on developing advanced video and image enhancement technology. With today's widespread use of digital still cameras, digital video cameras, and HDTV, the need for high-quality digital images and videos has greatly increased. Topaz Labs' mission is to bring practical state-of-the-art image and video enhancement technology to both professionals and consumers.

Be sure to check out the complete line up of Topaz products.

Image Plug-ins



Ultimate control over image exposure, detail, and color gives you the power to make your photos pop.



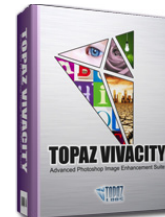
Advanced noise reduction filters reduce noise while maximizing and retaining image detail simply and effortlessly.



Takes any of your regular photos and effortlessly turn them into beautiful works of art.



Specializes in creating crisp and stylized images. Also features extensive smoothing capabilities.



Specializes in overall image improvement. Features sharpening, reconstructing, enlarging, high-quality noise removal and JPEG artifact damage tools.



Advanced JPEG artifact reduction filters eliminate JPEG compression artifacts while preserving image detail like never before.

Video Plug-ins



Easily and efficiently capture video frames and significantly increase their quality and resolution with this standalone Windows application.



Increase video quality with this suite of video enhancement filters utilizing super-resolution technology.

Go to <http://www.topazlabs.com/downloads> to get your 30-day free trial!